



SOUTH WEST

RHS South West in Bloom Autumn Newsletter 2020



Stop Press - Bloom to return in 2021



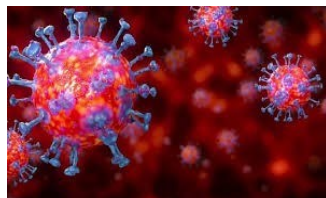
The Welcome Return of Bloom in 2021

If there are No COVID 19 Restrictions, in summer next year then we will undertake Judging as before.

The situation with COVID 19 is changing daily and hopefully by the time of judging we will be in that situation. During this year many of our community groups in the South West have been very resilient in still supporting and maintaining their communities.

Besides the Certificates from the RHS and South West in Bloom that went to all our communities including IYN's, we have also sent our own certificates to congratulate main competition entrants to recognise the outstanding and often imaginative activities during COVID 19.

If COVID 19 is still present next summer then we all need to follow all Regulations. However we consider with the special precautions we have we can still carry out **full Judging**. Priority will be to protect our judges, Bloom groups and local Communities.



If Corona virus is still active in the summer then the most likely scenario is that Social Distancing is still required. Judging will be done solo, and judges will need to drive themselves to site and on Tour.

Risk Assessments have been done, and if the situation requires these will be issued to all judges and entrants. Depending on how the situation is in Spring this may be printed in our Spring Newsletter.

We have carried forward all the entries for our Main, Bid and Pennant classes. I have written to all entrants to confirm this and also identify if they have already paid their entry fee, or if is still due.

Similarly we have rolled forward all of our IYN entries, and I have sent a confirmation to all those that are entered for next year. I have sent entry forms to all those that have entered before, but not renewed yet. All of those already entered will be listed on our web site. If you wish to enter the 2021 IYN competition you can download an entry form from our web site or contact the Secretary on southwestinbloom@aol.com.

Web Site www.southwestinbloom.org.uk

New Secretary for South West in Bloom

We are very pleased to be able to introduce the new secretary for South West in Bloom, Melissa Poole agreed to join us at the beginning of 2020, and she did attend her first event at the Annual General Meeting in March.

Unfortunately the shutdown due to COVID 19 followed very shortly afterwards. Melissa kindly agreed to delay her start with us until the end of 2020, as it would be very difficult to learn in a time when everything was changing.

However she has now joined us and will be looking to gradually learn about Bloom. She has experience in many business activities and has served as a PA. Some of you will have the chance to hopefully meet her at our Seminar in June, and perhaps during judging.



Melissa Poole

RHS South West in Bloom 2021 Schools Painting Competition

The theme for this year is

“ Learning in Lockdown. “

The age groups are as follows:

Up to 6 years old, 7 – 11 years old, 12 – 16 years old

Art should be a maximum of A3 in size. On the back of each painting, put names, age, and name of school and name of city, town or village.

Only one entry per age group, and they should be the winners of your local competition. Please note submitted works are non-returnable!

The best exhibit in each age category should be sent to:

Melissa Poole

c/o 15a Moorcroft Road, Hutton.

Weston super Mare, North Somerset. BS24 9RW

Entry Forms will be available in the Spring Newsletter.

Closing date for entries is Friday 16th July

Keep calm and keep planting

Patience Atkinson-Gregory, MD of Amberol (www.amberol.co.uk) looks back on the big challenges and little victories of 2020.

The last 10 months have had more than their fair share of challenges for everyone. But times of hardship and difficulty can also bring out the best in people. Community has always been at the very heart of Britain in Bloom, and although many of our communities have been physically distanced, the spirit that makes South West in Bloom so special remains.



This means that many of you have found ways to keep calm and keep planting throughout the pandemic – all within government guidelines of course. And at Amberol, we have felt happy and privileged to be in a position to help. So, apart from a brief closure when the first national lockdown was announced which allowed us to ensure our premises were Covid secure and fully compliant with healthy and safety standards, it has been business as usual.

And the demand for planters, litter bins and benches is still there, proving that In Bloomers are a dedicated bunch, not to be deterred in their mission of making their environments better places to live, work and visit.

In fact, despite the significant challenges, looking back over the year, there have also been numerous high points to celebrate.

Britain in Bloom Buzz – our special [Facebook group](#) continues to grow, offering a dedicated space for like-minded In Bloomers to share amazing photos, helpful tips and the latest news. With the restrictions placed on us all by Covid-19, the group is a great place to communicate, catch up or be inspired. If you're not a member yet, do come and join us!



Inspiring plant ups for 2021 -

2019 was an exciting year for us, having commemorated 50 years in business. So, once the celebrations were over, we wanted to produce something that would be helpful to our customers who have been so supportive of the company over the years.

We decided to mark the occasion by releasing our free Inspired Plant Ups guide. Published in the summer, the guide is downloadable from our website.

It is comprised of photos and descriptions of some of our customers' most



successful plant ups, illustrated with beautiful photos, including an entry from SWiB's very own Ottery St Mary, the guide is perfect for inspiring your 2021 planning and planting.

The Inspired Plant-Ups booklet can be downloaded for free by going to www.amberol.co.uk/downloads/inspired-plantups.

Green study published - in the autumn we were intrigued to see the results of a very worthwhile collaboration with the Royal Horticultural Society (RHS) and the Universities of Sheffield, Westminster and Virginia.

The project was a timely four-year study of the impact of green spaces on mental health, which we were delighted to support by donating 60 of our popular self-watering barrel planters; half for free and half at cost price. The containers were distributed to participants living in areas of deprivation who planted them up to create green spaces.

The report demonstrated that having a greener front garden can make people feel happier, more relaxed and closer to nature – something which most In Bloomers can vouch for! Our congratulations go to Dr Lauriane Suyin Chalmin-Pui, now an RHS Wellbeing Fellow who conducted the research as part of her PhD.



Photo opportunities - regular readers of our newsletters and social media will know that we run competitions throughout the year as a way of thanking customers for their support. So far this year we have had a 'Name the birdie' competition with our one-off chocolate orange bird bin, named Chomp, as the prize. Other competitions have included a quiz run in Clerks and Councils magazine with prizes of Amberol vouchers and also prizes for 1st, 2nd and 3rd placed entries in our Inspired Plant Ups guide.

More good news on the competition front: our popular annual photo competition is now running all year round. This means that entries for our customer galleries can be submitted at any time throughout the year via the online form on the Amberol website at www.amberol.co.uk. Winning photos will be awarded £200 worth of Amberol vouchers to spend on any rotationally moulded product so get snapping. Even in winter, keen-eyed Amberol spotters will be able to find some stunning displays. They don't even have to be in your region – the photo just has to be taken and submitted by the winner.

Looking towards 2021- we may not have seen our customers and friends as often as we would have liked to during 2020, but we continue to be here to support SWiB and its members in any way we can, through sponsorship, advice and personalised customer service.

The next few months may be challenging, but as we head into 2021, there is cause for optimism. And I have no doubt that the community groups of SWinB will emerge stronger and more determined than ever.

Thank you for your support and custom during this difficult year.



Chocolate orange bird bin,
named Chomp

Winner 2019 Moira Gregg, Aberdeenshire.

Minehead in Bloom 2021

Minehead sits on the West Somerset coast surrounded by the rolling Exmoor hills. It is a little isolated, but for the 11,000 residents, many who have holidayed here in the past, liked it, and decided to move here, it has all we need: wonderful walks, a beautiful sandy beach, a vibrant tree lined High Street full of independent stores, and many get up and go voluntary groups.



In 2018 the town's Chamber of Commerce persuaded a majority of its shopkeepers to create a Business Improvement District. It is one of Britain's smallest BID's but gaining Britain in Bloom status sits as one of our key objectives in the Business Plan. In our first year of operation we added 40 hanging baskets to the Council's public realm displays just to test the water.

The reaction from local residents, businesses and visitors to the town was overwhelming positive and in 2020 we had intended to expand this to over 100 additional hanging baskets along with extra planters to extend the floral displays throughout the town but sadly like so many things the Covid pandemic interrupted our plans and our attention was diverted to just helping our High Street survive.



Now we have had time to draw breathe we are starting to make our plans for recovery and are hoping in 2021 to venture back into the Bloom arena. We have a huge act to follow as over 20 years ago Minehead won best town awards nationally and internationally. Members of that award-winning team have offered advice but we are in no doubt there will be many

questions to ask and lessons to learn, hopefully, with your help, Minehead will hit the mark again.

Graham Sizer, Minehead BID Chair

Hi everyone

I am pleased to say that this our third newsletter is a new benchmark for South West in Bloom . Many congratulations to you all for your Stirling efforts in keeping things going within your communities throughout the region. I am so pleased to attend the Bloom Federation where we all have more than represented the South West and promoted many fine examples of exceptional Community projects.

The true values of your work however can be best featured in those communities we all serve as, it's at a local level that volunteering to maintain and improve our environments is so significant.

I have seen many examples of localism and the regeneration of community involvement in my own community as, well as many other places that I am heartened to see that from the hardships of Covid there are real benefits, many a re think of how we do things and a more inclusive and diverse approach to gardening, its impact as well as many transferable skills arising from its activities.

Children and young persons have had a great impact in raising awareness of Climate concerns and we must address these issues as a priority. We must also address the matter of food security local production and re tune food distribution Here at home we have been feeding ourselves much more from home produced products and with the frequent help of Terry with Veg initially grown for Chelsea have fed well and healthily. I can tell you it's made me think quite a lot and we will grow more next year for ourselves our neighbours and our family.

Tree Planting is seriously back on the agenda and having watched Countryfile The spirit of 1973 is now back , let's all plant trees and influence the development and management of the Environment. The new approach to Agriculture may have a major impact "Do we really need to prune hedges within fields with mechanical hedge trimmers?" Along roadsides yes but surely not in fields .

Above all is the advent and arrival of new subjects in our curriculum Enviro therapy well, Gardeners call it gardening, Bloom people call it Bloom! But the value of doing things, meeting people, addressing litter, beautification and the creation of habitats and all those local improvements are fantastic therapy.

Thank you all for everything Happy Christmas and a fantastic locally based future. You all make a difference and we all look forward to 2021 when we hope to celebrate a new look SWIB arising from out of lockdown.

Jon Wheatley. Chairman

South West in Bloom at Chelsea Flower Show

Back in 2014 we built a garden at Chelsea to represent South West in Bloom, and celebrate 50 years of Bloom. We had intended to build another Garden at Chelsea there in 2020, but COVID 19 meant the cancellation of all of the RHS shows, including Chelsea.



Taking the plans from last year we are again to build a garden to represent South West in Bloom and the SW Communities.

We are very much hoping that given their announcement that Chelsea 2021 will happen, our cancelled 2020 exhibit will now proceed.

We have started growing Veg Flowers and specimen plants for the exhibit and propose reflecting the wonderful values of growing here in the South West We would very much like to focus on many of the positives that have come out of COVID19, Tree planting, Food Security, Environment and Sustainability and above all Localism.

An idea is emerging whereby we would like to use a range of Barrows and Containers as well as our strong regional emphasis .

If you have any interesting regional ideas along these lines and COVID permitting we may again represent our work as we have in the past .

Please contact Terry or myself if you have some ideas.

Finally this is key to tourism , our sponsors and delivering a high profile message of what we are about in Sunny South West again arising out of adversity this time from COVID last time from flooding.



Spring Seminar 2021

We had no option but to postpone our Spring Seminar in March 2020 due to the increase in COVID 19. I agreed with the Mariners Hall and the Dolphin hotel that we would carry forward the booking to March 2021.

This was probably a little optimistic, and now we are looking forward to a challenging and difficult winter. It looks very unlikely that, even with a Vaccination on the horizon, we will be able to hold the seminar next March.

We have therefore postponed it yet again until 3rd June 2021, still in the same venue in Beer, lunch at the Dolphin hotel and the same exciting speakers. As there are no Park awards to present at this Seminar, Nina Acton has agreed to give a full presentation on her show planning.

If you have booked for the original Seminar in March 2020 I will carry forward your ticket purchase if that is your wish. If you want to cancel then please let me know. Tickets can still be purchased for the seminar and a booking form can be downloaded from our Web site or obtained from our Secretary.



Mike Nelhams

Mike trained at RHS Wisley. Mike currently runs Tresco including the world famous Tresco Abbey Gardens. An Internationally recognised Plantsman and Corresponding member of the RHS Tender Plants Committee

Mike understands the Environment where on Tresco they are totally self sufficient and their Community all take part in making Tresco one of the most Beautiful places in Europe

Mike will be our keynote speaker and will also take part in our Spring seminar question time



Nina Acton

Nina Acton is the Inspirational choreographer of “All things Floral at the Three Counties RHS Malvern Festival”

Nina is an Internationally recognised person whose design and planning skills make Malvern one of the finest Flower Show venues in the World.

Nina will join Mike on the Question time panel.

Spring Seminar 2021

Thursday 3rd June

The Mariners Hall, Beer

10.00 a.m. to 4.00 p.m.

Programme (Provisional)

10:00 Coffee, Welcome & introductions

10:15 “Gardening for the Neuro-Disabled.” A Journey

Josephine Spring

11.00 Comfort break

11.10 **Bloom in Tresco**

Mike Nelhams

12:30 Lunch Bar Available

13.45 **Floral Three Counties**

Nina Acton

14.30 RHS Workshop **Volunteers**
 Social Media

Susannah Hodge
Emily Braham

15.30 Question Time

16.00 Closing Remarks

Cost £20.00 per delegate.

We still have a very good programme for the 2021 Seminar. There will be a workshop when delegates can discuss and share ideas with officers of the Royal Horticultural Society.

I have a list of all those that had booked tickets for the seminar in March 2020, and unless they contact me I will send tickets for this revised date.

If any others wish to attend the seminar they can download a booking form from our web site or e mail a request to our secretary on southwestinbloom@aol.com

Closing date for bookings Thursday 20th May.



Glendale supports community involvement initiatives.

Glendale have announced national support for the southwest based #2minutecampaign to support communities who wish to help with litter picking of parks, open spaces, beaches and streets.

The #2minutebeachclean foundation is based in Bude, Cornwall. They have recently moved away from a purely beach cleaning focus and launched the #2minutelitterpick and #2minutestreetclean campaign. The #2minutecampaign use social media and direct action to empower, educate, inspire and enable individuals, groups and businesses to make simple changes or take part in simple actions that will contribute to the planet's wellbeing, as well as their own.



Initially in collaboration with Torbay and North Somerset Council, Glendale have recently installed five litter picking billboards within Parks in Weston-super-Mare and Torquay to enable the public to help keep their parks clean and tidy. The boards hold five litter pickers, 10 reusable rubbish bags, made from discarded tents left at music festivals and hand sanitizer as well as useful advice on safe litter picking.

Terry Doyle, Managing Director for Glendale in the South commented "Glendale has always looked for ways to support the community in the management and maintenance of the parks and open spaces we maintain.

Our team works closely with friends of groups, volunteers and bloomers to make improvements to our environment every day. We know that there are thousands of amazing people who are willing to get involved and make their neighbourhoods a better place to live, they just need the tools to support them. These boards are conveniently located and available 24/7 to allow anyone to get involved. A commitment to only 2 minutes a day, adds up to a huge amount of improvement, energy and enthusiasm.

www.beachclean.net
www.glendale-services.co.uk



Glendale rated as No 1 Arboriculture business by The Horticulture Week.

Glendale are currently ranked 1st in the Horticulture Week Top 30 Arboriculture business in the UK 2020.

Glendale's passion for tree management services derives from our 30 years experience in the UK green services sector and has grown from a demand from our clients. We employ over 200 arborists across the UK and in the Southwest all our arbor offices are approved by the Arboricultural Association holding the ARB approved contractor status. This ensures that our managers and teams offer expert advice on all tree related issues, from routine inspections and advice, to practical tree surgery and emergency call outs for dangerous trees.



As well as the full suite of tree surgery and tree removal services, our Civic Trees business are experts in the supply, handling, planting and relocating of mature and semi-mature trees, with a range of tree spades, including the largest tree spade in the UK, capable of moving bigger trees than any other company.

In the Southwest we work for County & District Councils, Parish & Town Councils, Commercial Companies & Environmental Charities and Private Clients from Arbor offices at Hayle, Launceston, Exeter, Blandford Forum and Bristol.

For more information on services available or to discuss any tree related concerns call Julian Montague, Glendale Manager, Arboriculture Southwest on 07721 866 205

www.glendale-services.co.uk

www.civic-trees.co.uk



Leading a Greener Future



St Matthews garden group, Plymouth – in and out of lockdown

The group started in 2018 to restore the extensive grounds surrounding the church. Group members have donated many plants, as have members of the congregation and local residents, so we are a true community garden. Although new planting is in progress, existing plantings have been preserved as older members of the congregation have gardened previously and we wish to respect and preserve their work. The group met on the Wednesday before lockdown, Spring bulbs were already flowering and the site was tidy. Under Church of England guidance, gardening was not permitted. The group members were upset that they could no longer garden on site, so, a series of projects were listed, which were home based and members kindly agreed to undertake them and were informed by telephone, email or letter. The craft group also joined in.



Off-site projects

An emergency newsletter for the church included weekly garden tips by the group co-ordinator. Two documents were prepared by a retired teacher of activities that children could do relating to nature in their houses and gardens. These were circulated to families. A wooden hedgehog house, a bird box and a bee home were made. A document was written on the wild flowers by one member and illustrated by another. Information on the history of the church was in preparation. Flower seeds were collected and plants potted up for planting out when the group resumed. A knitted garden pattern was found and bugs and bees knitted and crocheted.

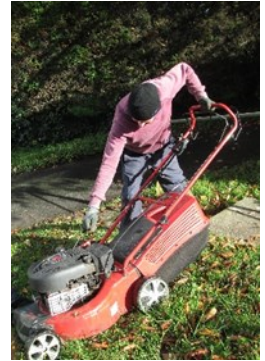


Community support

Members of the group produced the newsletter and helped deliver it, made masks, shopped for others, provided vegetables, seeds and plants, including lettuce and tomatoes for window sill growing.

Preparing to return

A guidance document for hygiene measures was drawn up and checked by an expert on hygiene. It was agreed to garden in socially distanced pairs and approval was obtained from the archdeacon. As co-ordination is by telephone, a map was sketched to help identify features. Waste had previously been deposited in the vicarage grounds so green waste bins were needed. An appeal for pallets got material and two were built and installed. A second water butt was donated, repaired and installed. The hedgehog house, bee home and bird box were placed. The garden was inspected on June 23 and there were many weeds and a hay field on the north slope with big anthills had developed.



Gardening recommences



Paired gardening began with great enthusiasm and weeds were cleared, long grass sheared and raked then mowed and planting recommenced. The perennials had bloomed well and summer bulbs gave a colourful display.

The church reopened for private prayer with vibrant flowers and mowed lawns. The power drive failed on the mower, but a replacement was donated and refurbished. An appeal for

mowing assistance brought two new members into the group, one previous member retired but is donating a broom plant as it is referred to in the Bible.

We are now back in lockdown but have plans for an outdoor Christmas tree, lit and decorated with ribbons in memory of those who have died recently.



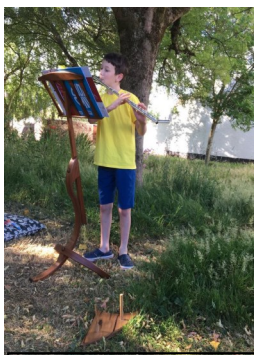
Little Silver community garden benefits residents and wildlife

Tucked away in the northern fringes of Exeter city centre is a secluded garden that many locals don't even know exists. Little Silver was once a slum area, demolished in 1963 and grassed over by the council. Fast forward to today and this tiny oasis has become a haven for wildlife with meadow patches, woodland flowers, and mature lime, birch and ash trees.

Hearteningly, during the dark days of the COVID-19 lockdowns, this secret garden was also a source of inspiration and solace for residents and those visitors lucky enough to happen upon it – a theme picked up by Radio Devon when we were interviewed about the therapeutic effect of the project on the local community.

For the past 18 months Little Silver has been cared for by local volunteers who are transforming it from a tidy but undistinguished patch of amenity grass into a mosaic of native wildflower meadow, woodland edge habitat, and swathes of nectar-rich planting for pollinators.

Significantly, this neighbourhood project has united the local community, with many residents contributing their time and helping to fund the cost of wildflower seed mixes, bulbs, plug plants – including native orchids – and pictorial meadow turf.



Jacob's Flute Recital

Community effort

It's not all been hard work! The neighbourhood has also come together for social events in Little Silver, delighting in magical flute recitals during lockdown, revelling in the fun of a post-lockdown garden party, and appreciating an increasingly rich tapestry of wildlife.

The idea of enhancing Little Silver for the benefit of all was the inspiration of the late Maeve Creber, a long-time resident.

Each year since 2013, the area has been enriched by volunteers, planting a central shrubbery and thousands of bulbs.

In 2019, a series of consultative meetings gave the greenlight to encourage even greater levels of biodiversity.



Importantly, the gardeners decided not to attempt a wholesale conversion to wildflower meadow, as this takes time to establish.

Instead, we created an instant meadow effect by laying “pictorial meadow” turf in some spots and converting the remaining areas through scarifying and removing coarse grasses, cutting and taking away the grass clippings, planting hundreds of wildflower plugs, native bulbs, and sowing different

wildflower seed mixes to suit specific sections of the green.



Wildlife value

Now we have beauty and interest throughout the year, and the native planting supports the objectives of the Exeter Wild City initiative to increase the wildlife value of urban green spaces. Our activity has boosted diversity and wildlife numbers: coal tits have raised broods in the nest boxes; several butterfly species visited, the

highlight being a silver-washed fritillary on the pictorial meadow, and we have seen an uptick in grassland and woodland edge butterflies; in summer the area hums with pollinators, including honeybees, bumble bees, solitary bees and hoverflies. Larger visitors include a vixen and badger, while bats enjoy the abundant insects.

The name of our patch is Little Silver, derived from “litel”, meaning outside, and Silver from the Latin word for wood “silva”; hence, “wood outside the walls”. Little Silver is slowly returning to its roots.



Entertaining With Plants

All of us who show and grow plants are in the entertainment business. It maybe that we do this for our own pleasure or that we wish to do it for others. Great landscapers such as Capability Brown was very conscience about his audience as he created his landscape masterpieces for the rich and famous. In more modest terms, in Bloom we aim to please or entertain our audience whether that is in private gardens, community spaces, parks or amenity spaces.

Another branch of entertaining with plants is in our flower shows. Chelsea Flower Show was established from the will of Landowners and their Head Gardeners wishing to display what they believed is the very best to be seen. This included



plants which had been gathered on plant hunting expeditions, or by those which had been hybridised by aspiring plant breeders. The plant world welcomes all who take an interest, and this year has been extraordinary by any means. The sequence of lockdowns, more time available to garden, the challenge of accessing basic materials such as compost, shopping for our seeds on-line,

has seen our gardening prowess as we have never seen it before!

Gardeners by their nature are stoic individuals, and in the SW there has been some quietly amazing displays-not least of all in Beer which will be hosting our Spring Seminar next year. It is therefore frustrating that in a year of gardening resolve and fine weather, there has been no Bloom judging and sadly none of our major flower shows have taken place.

But we are all adjusting to a new way of running our everyday lives. Next year, Bloom Competitions will be back with a vengeance. Our gardens will be better from the increased knowledge we gained this year, and Flower Showsyes, they are changing too!

The desire to Entertain with Plants continues. The lockdown saw viewer numbers for gardening shows massively increase, with Alan Titchmarsh on ITV still holding the highest viewing figures of any gardening show. Monty Don has taken several breathers from BBC Gardeners' World when Adam Frost has taken over.



How many Bloomers know that Adam started his career in Barnstaple Parks? We also have Carol Klein on the programme-a Devon resident. The subscriptions for BBC Gardeners' World magazine also rocketed in lockdown-the magazine sector offering a different 'entertainment with plants'.

The format of many shows are to change next year with many, including Chelsea, announcing a restriction of numbers. Some are losing their traditional nursery displays next year-let's hope that is not a trend. There are new shows emerging, and in the South West

fingers crossed that the shows based in Cornwall and Taunton still go ahead. Plans are afoot at BBC Gardeners World Live (NEC 17-20 June) to bring alive a real feast of plants, gardens and food too-it's an interactive show with plenty of gardening celebrities to see. Toby Buckland from Devon is building the main Show Garden, and one of the resident Plant Experts is from Dawlish! Saul Walker is one of the best at plant ID and answering your difficult questions. There are many familiar faces to be found at the show including, Monty Don, Adam Frost,



Carol Klein and Joe Swift. Plus Alan Titchmarsh on Saturday, too.

A Bloom character Jim Buttress, former Chairman of National Judges, is often to be found relaying a story in the Floral Marquee whilst the SW's Chairman Jon Wheatley can be found nurturing a new Foxtail Lily display, or maybe veg with Terry Porter or, maybe next year something

more unusual?! Lynn Talbot has proudly represented Sidmouth there in the past. A massively successful section of the show is the Beautiful Borders.

There are dozens of them-nearly all designed and planted by amateurs ranging from charity groups, communities, students and friends. It would be good to have some Bloomers involved, if any Bloomers are interested, details can be found on the website or in BBC Gardeners' World Magazine.

So, entertaining with plants lives on!



As a treat to SW in Bloom Communities there is a special ticket offer for 2021, for all of your team members.

You can now book tickets to BBC Gardeners' World Live 2021, at Birmingham's NEC from 17-20 June with 25% off! Quote SWB25 when Booking to access this early bird rate before **12 January 2021.***

If you subscribe to BBC Gardeners' World magazine, you can use your unique 10-digit subscriber number to unlock the exclusive subscriber 30% discount before **12th January 2021***

Book today at bbcgardenersworldlive.com.



Kingsbridge

Volunteers have been busy all year looking after the Town, keeping it looking as bright as always.

Kingsbridge is no different to many towns with some shops and businesses closing due to COVID.

The Bloom group has found a use for one of the empty widows, an ideal place to brighten it up with a display of the Bloom groups works.



Remembering our fallen who gave their lives serving their country.

It has been with great sadness that the normal Remembrance Parade has not been able to take place this year, however, poppy wreaths were laid at the War Memorial in Kingsteignton on Sunday 8th November, 2020 by Kingsteignton Town Council Mayor, Cllr Dave Rollason and The Royal British Legion, in respect of our fallen comrades.

We hope that our residents were also able to join the national 2 minute silence.



The Royal British Legion would like to thank everybody who has supported them in the past years in various ways and hope that next year they will be able to return to normal arrangements to mark this significant date. In the meantime, it was hoped that residents would continue to support the 'Poppy Appeal'.

There was the opportunity to walk to the Fountain in Kingsteignton, and take a few moments to admire the incredible display of knitted and crocheted poppies, placed to mark our fallen comrades and horses during past war times.

The Kingsteignton Post Meridian W.I. have provided this display to coincide with marking their 50th Anniversary, 1970 - 2020 as well as the 75th Anniversary of Victory in Europe marking the end of WWII. The ladies have spent many, many hours of hard work knitting, crocheting and assembling these beautiful poppies and horses display and the Council, said they "could not thank them enough! " This display remained in situ until Monday 16th November, 2020.

Please Note :- The closing date for the Main Competition, IYN, Town Centre and Commercial. Leisure & Tourism entries is

SATURDAY 13th MARCH

You can enter on line from 10th January.

Lyme Garden Growers

The group was started by Rikey Austin and her husband Paddy. The idea started because Rikey was shocked that some local residents could not afford fresh fruit and vegetables.

They wanted to see their local food miles turned into food feet with a local garden growing scheme and farmers market. Working together as new and experienced growers to get the most out of locally grown fruit, veg, and plants.

Rikey and Paddy also ordered hundreds of bags of compost, (ordered and paid for by BACS by members) and had it delivered to their home in Church Street Lyme Regis. This ensured they had the cheapest price.

“THERE ARE NO STUPID QUESTIONS - We all have stuff to learn and we should never stop being open to new ideas. On top of that, there's a real joy to helping a novice discover the absolute joy of growing.”

“THIS GROUP ISN'T ABOUT SWAPPING, IT'S ABOUT SHARING - So don't worry if you have nothing to share yet. We'll get you going.”



During the lockdown they gathered plants from members at their home, quarantining them, then sharing them out at one safe location to avoid lots of travelling and confusion. Members could call to collect them, but making sure they observed social distancing rules, so if someone is already collecting, they had to wait or just drop off plants they want to donate.

They run a Facebook page where all the plants and seeds are free and members can donate plants, these are posted on the site, others can request these plants, or even post what they are looking for. They post when members can pick up their plants, and where they are for collection. The couple hope to buy some land and create a Community Allotment.

A very novel way of encouraging new gardeners, and helping everyone to do that bit of “Grow your own” It's our absolute pleasure for members to be part of a project to get Lyme growing and build a little food security into our community.

RHS Community Awards 2021

The South West in Bloom team are working hard to ensure that regional judging can be carried out in a safe way, unfortunately nationally we do not have the flexibility that Regions can employ in their judging.

As the year has progressed and the uncertainty around COVID-19 continues, we have decided that we cannot safely plan a physical tour right across the UK. The health and wellbeing of volunteers – judges, groups, and their wider communities is of the utmost importance to us. Therefore we are cancelling the Britain in Bloom UK Finals for 2021. This is a temporary measure, and we hope to resume the programme in 2022, once the worst of this pandemic has passed.

Although the UK Finals and most other Regional Bloom programmes stopped this year, most groups carried on supporting and transforming their communities in socially distanced ways. Bloom groups played an important role in ensuring their communities were resilient in the face of the pandemic and many adapted their activity according to community need.

Even though the pandemic continues to restrict our activity, we do still want to celebrate the amazing work that groups are doing in 2021 and we will be running a new digital programme called the RHS Community Awards instead.

These Community Awards will reflect and celebrate some of the activities that so many groups have been doing this year, such as growing food or sharing their skills.

The Community Awards will launch in January 2021, and we look forward to information about them in the New Year. Please address any questions about the Awards to the team at: communities@rhs.org.uk

South West in Bloom will have two new Discretionary Awards

Best Example of Sustainable Planting

The Best use of Plants

Competition and IYN entries in 2021

We have carried forward all the entries for our main, Bid and Pennant classes. **I have written to all entrants to confirm this and to identify if they have already paid their entry fee, or if it is still due.**

We have rolled forward all of our IYN entries, **and I have sent a confirmation to all those that are entered for next year.**

I have sent entry forms to all those that have entered before, but not renewed yet. All of those already entered will be listed on our web site.

If you wish to enter the 2021 IYN competition you can download an entry form from our web site or contact the Secretary on southwestinbloom@aol.com.

Business ,Leisure, Tourism & Commercial Award

It was disappointing that we had to cancel our Business Awards in 2020, along with all other competitions.

The scheme will be started again in 2021 and we are looking forward to Business's entering. Those that entered in 2020, and paid their entrance fees, will be rolled forward to 2021. Entry forms will be sent to all other business that have entered before.



Presentation of the awards will be at our presentation event in the Winter Gardens Pavillion at Weston super Mare on the 7th October.

The entry fee is again £20 per entry to help cover assessment and feedback costs. This environmental benchmarking award has much to commend itself for as a measure of quality.



Judges will be looking at areas around entrances, public facilities, standard of maintenance and general appearance. As well as interesting and original floral displays, general landscaping and general maintenance of grassed areas.

Entry forms can be obtained from our Secretary Melissa or downloaded from our Web site.

Bloom goes forward

You all will have noticed that we intend running Bloom in 2021. It is within that context that we will be encouraging a more sustainable approach to our activities.

On a specific point for example my car mileage for 2019 was 30k miles 2020 it's about 3k . We are increasing composting we are reducing herbicide and pesticide use Electricity is the order of the day. I never thought that I would use an electric chain saw, hedge trimmer or blower but they have all arrived and started to take over our operations.

We can hold meetings by zoom and it's so interesting to see how too the point and effective such meetings [are Social](#) media and new means of communication are effective to such a degree that many plant producers are doing better via the web site click and collect that traditional sales methods.

Grow your own is back big time Seeds producers are thriving (a tip collect your own when you can) if you cant store purchased seed and don't sow all the packet at once.

If you can get Children and young persons to sow seed, the outcome might be a new generation of growers which we really need. Who cut Rural Science and Agriculture from the Schools curriculum!?

We will be looking both regionally and nationally at young persons involvement in communicating the values of Bloom , Wildlife and Water Gardening and are open to ideas for assessment from all of you. So please don't hold back send information to Terry and Melissa, our newly appointed secretary, as a matter of course.

Of particular focus must be the impact of gardening and growing within our Inner City Communities such as Bristol , Swindon, Plymouth and our less fortunate and provided for areas . Creative approaches to solving issues through our activities are so welcome, things are changing for the good . We can shape the future by working together.

Finally we are seriously indebted to Kay Clark and her team at the RHS for their creative and open support.

Jon Wheatley

Closing Date for Business, Leisure & Community entries is
SATURDAY 13th MARCH

Presidents Message

I hope you are all keeping well in these still troubling times. My Committee met for the very first time virtually via Zoom in early November. It was nice to see so many people from across the South West ,the last time was at our AGM in March.

Chairman Jon welcomed everyone including Kay from the RHS. It was agreed that we would try and run our competitions in 2021, government permitting.



The judges will follow completely new guidelines as will the entrants to keep as safe as possible. All will be explained by Jon and Terry.

Across our region many new initiatives have taken place , with you showing your creativity during “lockdown”. Groups have still been actively involved, and I am aware of many trees and bulbs being planted.

Those of us who are fortunate to have a garden , or even a tub or window box have felt the benefit. Our physical and mental wellbeing have found that tending your plants, watching in amazement the emerging seeds that you sowed, then turning into something beautiful. So when permitted share these experiences with those less fortunate.

Covid has already shown up some amazing stories of how people have helped their communities, so this is a chance to invite some into your “bloom” groups where new friendships can be forged.

More pressure is now being put on Local authorities to provide more allotments, as people have turned to growing their own, the demand seeing a long waiting list for plots.

So much so in March many major seed companies had to limit purchase of many varieties of veg seed, as running out of stock, such was the demand.

Another issue Covid has highlighted is the increased use of Public Open Space. Small garden areas, up to large local authority managed public parks, to picnic, exercise or simply walk your dog, have become increasingly important for our wellbeing.



The Chartered Institute of Horticulture have raised concern that over the years with many local authority reorganisations, and the closing of professional bodies many skilled workers have been lost especially in professional positions. It is imperative that we have people qualified to the highest level to manage them, and have a clear vision for the future.

With budget cuts this is where South West in Bloom members play an important role, as I know many of you do. With your groups maintaining many public areas along with “Friends” groups.

So Stay safe, Enjoy the Festive season as we look forward to a brighter 2021

Vic Verrier MBE
President



Manor Gardens, Exmouth

RHS South West in Bloom Pride in Park award.

Following the cancellation of the 2020 Parks award, we are pleased to say that all is in preparation for a return in 2021 with Judging taking place between June and December.

This will allow for the park to be judged at “Its Best”. If COVID 19 restrictions are in place then we have now developed Risk assessment that should allow judging to still take place.

Before we had to cancel last years competition I had received some entries, and the fees paid, so these entries will be forwarded to 2021 and I will be confirming this with those entrants. Other entries can download an entry form on our Web site.

Entry forms are also available from our secretary Melissa Poole.

As in previous years the presentation for the 2021 awards will be held as part of the Spring Seminar in 2022.

**Closing date for entries is
Monday June 14th.**

Morab Gardens Penzance



Roots of Remembrance

This winter, the RHS is inviting community groups, schools, businesses and local authorities to plant trees in memory of those who have lost their lives during the Covid-19 pandemic.

What began as a tribute to the late Bill Blackledge MBE, a passionate horticulturist and former Chair of North West in Bloom (NWiB), has blossomed into a UK-wide effort to mark this difficult period. Many groups in the North West have planted trees and even orchards in Bill's honour, spurring on the idea for a national tree planting campaign.

Many people have not been able to say a proper goodbye to loved ones, and so memorial trees can provide a physical place to remember, reflect and celebrate someone special for generations to come. A fitting tribute to fellow gardeners, a tree also allows a physical place to visit, reflect and celebrate a loved ones for generations to come, while benefiting nature.



Anyone who would like to remember a loved one who passed away during the pandemic is invited to join in and plant a tree (or trees), each tree will be added to a new RHS Roots of Remembrance map. Trees can be any size, shape or variety in order to suit everyone's budgets and capabilities.

Please visit our website to tell us about your tree and who you are planting it for: rhs.org.uk/get-involved/community-gardening/remembrance

You can also share a picture of your tree planting on social media, using the hashtag #rootsofremembrance, or you could email your photo and a short description of your tree and who it remembers over to communities@rhs.org.uk

Photo provided by RHS

Please Note :- The closing date for the Main Competition, IYN, Town Centre and Commercial. Leisure & Tourism entries is

SATURDAY 13th MARCH

Kick start your career in gardening

Have you or someone you know deepened a passion for gardening during lockdown, and are wondering how to turn this into a career? The RHS is recruiting horticultural apprentices, for earn-while-you-learn positions in 2021.

This is your chance to spend two years working alongside experienced and inspiring horticulturists in an RHS garden.



No prior experience or horticultural qualification is required.

Applications open on 1st Dec and close on 1st March 2021, and apprenticeship places will commence in August. You can find more details at rhs.org.uk/education-learning and follow the “Work based learning” link

Make your community more wildlife friendly

Start planning your 2021 gardening activities with wildlife in mind. It’s tricky to know what’s in store and how much we will be able to grow together next year, but it should be possible to add in some new wildlife-friendly features to your community gardens and green spaces. Or, it may just be a chance to get to know local wildlife better.

With RHS Senior Horticultural Advisor and wildlife gardening expert, Helen Bostock, to get started. You can watch the RHS video on <https://youtu.be/TIRoAbOjRPk> It is really interesting.



New fungal disease to watch for

Petrakia liobae is a newly identified fungal leaf pathogen of beech (*Fagus* spp.) in Europe. It has also been reported on hornbeam (*Carpinus betulus*) in heavily infested areas. Infected hosts develop brown irregular necrotic leaf spots with a sharp, dark border, around 1-50 mm in diameter, and spots may merge in heavy infestations. More information is available from the RHS.

<https://planthealthportal.defra.gov.uk/>

Photos provided by RHS

South West in Bloom
Winners of the Children's Painting Competition 2020

This year with lockdown and the presence of COVID 19 the number of photos received in the competition was down considerably, especially as many of the Schools were closed for some time. The theme this year was "**Climate Change and Me**". Our thanks go to Lady Emma Fellowes for judging this years photo competition, and her thoughtful comments.

South West in Bloom
Winners of the Children's Painting Competition 2020.

Children's Picture Competition
Up to 6 years Old

Lilly Waters Age 4
The Brambles Nursery
St Just
Highly Commended
Lady Emma's comments
This is a wonderfully Colourful
and Happy Painting.
Well Done.

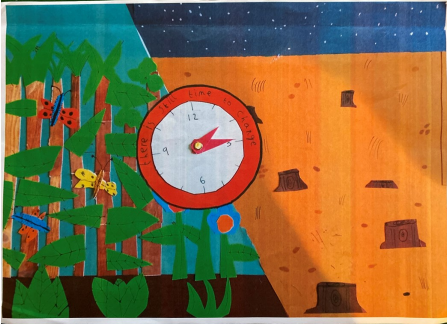


Louis Jenkins Age 6
High Down Infants School
Portishead
Highly Commended
Lady Emma's comments
This is full of Energy and
thought.

Thelo Tucker Age 5
St Just Junior School
Winner
Lady Emma's comments
Very Well thought out
Congratulations.
Well Done.



Children's Picture Competition
7 to 11 years Old



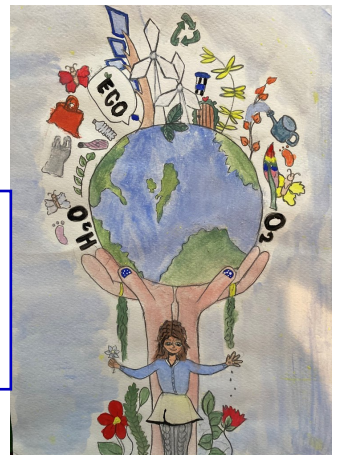
Rosemary Downing Age 8
St Just Junior School
Highly Commended
Lady Emma's comments
Extremely original + Clever +
Thought provoking.
Well Done

Isla Rose Age 9
5th Withycombe Methodist Brownies
Exmouth in Bloom
Highly Commended
Lady Emma's comments
This is a very clever & thoughtful
Piece of work.
Well Done.



Joshua Caunt Age 8
Plympton St Maurice
Primary School, Plymouth
Highly Commended
Lady Emma's comments
A Very Clever Concept.

Holly Bjergfelt Age 10
High Down Juniors
Portishead
Winner
This is an exceptional piece of work.





SOUTH WEST



Important Dates for 2021

| | |
|------------------------|---|
| Regional Judging. | Wed 1st July to Wed 15th July. |
| IYN Assessments. | Wed 1st July to Friday 31st July. |
| Pride in Park judging. | June 2021 to December 2021. |
| Spring Seminar. | Thursday 3rd June 2021 Beer. |
| Presentation. | Thursday October 7th 2021 The Winter Gardens Pavilion Weston super Mare. |

Please note. There will be No National Britain in Bloom Competition in 2021.

Our South West in Bloom Facebook Page is also a great way for groups to showcase the work they have been doing- if your group has a facebook page, we would love for you to join ours.

<https://www.facebook.com/pages/South-West-In-Bloom/193263914018665>

Secretary. Melissa Poole
c/o 15a Moorcroft Road
Hutton, Weston super Mare
North Somerset. BS24 9RW
E Mail :-
southwestinbloom@aol.com .

Editor. Terry Porter
15a Moorcroft Road
Hutton, Weston super Mare
North Somerset. BS24 9RW
E Mail taporter11@aol.com .
Tel No 07989 855339

Web Site www.southwestinbloom.org.uk