

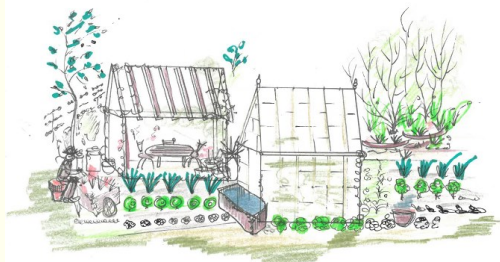


Britain in Bloom - South West Spring Newsletter 2023



South West in Bloom returns to Chelsea.

Continuing to fly the flag for Bloom, the South West will again be building a Show Garden at Chelsea 2023.



The garden will again be designed by our Chairman Jon Wheatley, and built by our usual team. The garden will represent all the aspects of Bloom.

At the recent RHS awards ceremony Jon was awarded the Victoria Medal of Honour, the highest award that can be made by the RHS. The presentation was made by Keith Weed, President of the RHS.



Glendale

Presentation Event 2023

Tuesday 3rd October

In the spectacular venue of Truro Cathedral

Following the success of previous years presentations, we will be following the same format this year.

It will be Cabaret seating for both the Presentation and Lunch.

Cost £28 per Delegate

Closing date for bookings Friday 15th September

We held a very successful event in Truro Cathedral in 2013, and we welcome the opportunity to return 10 years later.

The event will be hosted by Truro in Bloom, a 2023 National entry.



Presentation ITINERARY FOR THE DAY

- 9.30 am Registration
- 10.15 am Welcome by **Cllr Carol Swain, Mayor of Truro**
- 10.30 am RHS Garden Rosemoor and its plant gems. **Jon Webster**
- 11.30 am Comfort break
- 11.45 am Guest Speaker Yet to be confirmed,
- 12.45 pm Lunch
- 2.30 pm South West in Bloom Awards
- 4.00 pm Closing by **Jon Wheatley**
- 4.15 pm Judges surgeries for Main Competition entries

RHS South West in Bloom Presentation Day at Truro

Tickets are £28 and booking forms are enclosed with this newsletter and available to download from our website.



Jon joined RHS Garden Rosemoor in 2005 relocating from RHS Garden Wisley and has been Curator since 2010. His career started at Ventnor Botanic Garden in his native Isle of Wight, before moving to Cambridge University Botanic Garden to further his studies. A big supporter of Plant Heritage and serving as Vice Chair for the Plant Collections Committee, he is also the chair of the Devon Group.

Jon Webster RHS by Oliver Kite



Shrub Rose Garden, RHS by Richard Bloom

Spring Seminar 2024

We will be holding our Spring Seminar in March 2024 at RHS Rosemoor, so this will be an excellent opportunity to see some of the delights of the gardens before perhaps visiting there next Spring.



Truro Cathedral



2022 Pride in Park Awards

NAME OF PARK/OPEN SPACE	TOWN/VILLAGE	AWARD
Bristol		
Troopers Hill	Bristol	5 STAR
Somerset		
Yeovil Recreation Ground	Yeovil	5 STAR
Yeovil Country Park	Yeovil	5 STAR
North Somerset		
Rodmoor Gardens	Portishead	5 STAR
Jubilee Park	Portishead	5 STAR
Cornwall		
Poltair Park	St Austell	3 STAR
Penlee Gardens	Penzance	5 STAR
Trenance Gardens	Newquay	5 STAR
Wiltshire		
John Coles Park	Chippenham	5 STAR
Stanley Park	Chippenham	5 STAR
Devon		
The Glen	Honiton	3 STAR
Blackmore Gardens	Sidmouth	5 STAR
Connaught Gardens	Sidmouth	5 STAR
Great Torrington Common	Great Torrington	5 STAR
Mill Marsh Park	Bovey Tracey	5 STAR
Tessier Gardens	Torquay	5 STAR
Memorial Recreation Ground	Kingsbridge	5 STAR
Rock Park	Barnstaple	5 STAR
Manor Gardens	Exmouth	5 STAR
Phear Park	Exmouth	5 STAR
Pavilion Gardens	Exmouth	5 STAR
Seafeld Gardens	Seaton	5 STAR

Closing date for entries 2023

Monday 12th June.

Britain in Bloom South West Pride in Park Award 2023.

The parks and green spaces in the South West with the Pride in Parks award continues to be a success and the 2022 awards were presented at the South West in Bloom Seminar in the Town Hall, Glastonbury on Thursday 23rd March.

You are able to enter your park for 2023 up to the closing date of Monday 12th June.

The criteria is the same as last year and full details are available from the secretary or on our Web site. It is again important that the entry is community led, and there will need to be a community representative at the judging. The time allocation will depend on the size of the park or Green open space, and can be up to 2hrs.

Please indicate on the entry form the estimated time needed to judge the entry.

Judging can take place from June until the end of the year, as often parks are better judged at different Seasons. You will be able to indicate the general date for judging, but if you have a special event, we will try to judge it on a specific day, if sufficient notice is given. Details can be entered on the entry form, which should be returned to the secretary.

The entries are awarded one to five stars, the five star equating to a Gold award.

There is an entry fee of £30 for 2023.

Entrants will receive a certificate showing the award received, together with a plaque.

Entry forms are available from the Secretary or on our Web site.

www.southwestinbloom.org.uk



Poltair Park, St Austell



Seafield Gardens, Seaton

GLENDALE

Putting Green on Beach Lawns Weston super Mare



The Putting Green on Beach Lawns WSM has benefitted from the re-purposing of many of the trees and shrubs that were used on the recent SEE Monster project. Glendale provided their telehandler and Horticulture teams to deliver this project, some overseeding and suitable weather should see this project flourish.

TinyLineMarker® Pro X

Glendale recently invested in the future by sourcing the TinyLineMarker® Pro X, this field painter is designed for heavy use and demanding field painting, yet it is still portable and can be deployed on the field within 5 minutes.

The big wheels keep the Pro X-model going even when the surface is soft, and the sturdy construction ensures reliable operation every time. With 2.6 gallons in the paint container, Pro X can paint several fields before refill is needed, and this makes it a real time-saver.

One site in particular in the South West would normally take a team 2 full days to initial mark, this was done in just 4 hours.



Our sponsor Glendale offers horticulture expertise including, grounds maintenance and tree surgery, landscaping & fencing and countryside contracting services.

Chelsea flower show 2023



This year Emily Jarrett, a Glendale apprentice, has the privilege to be going to Chelsea with the in Bloom Team, this will start as she assists Terry Porter with the packing of plants ready to transport to Chelsea. When first approached about going to Chelsea, Emily was delighted as she had colleagues from College that were also attending and it would be a good opportunity to meet up, We then explained that she had the privilege to be part of the process of building the in Bloom garden.

A real achievement at such a young age.

Stanley's Garden Worle



After much hard work Stanley's Garden is now ready for use by the local people. Glendale and their staff together with Paul Ballinger supplied and planted most of the shrubs and flowers, and gave advice on the construction and planning of the garden. This year Stanley's Garden will enter South West in Bloom in the "It's your neighbourhood" category.

Noah's Ark Zoo Farm Christmas tree scheme

Noah's Ark Zoo and North Somerset Council joined forces again in January 2023 with the Christmas Tree recycling program. Residents in North Somerset were invited to drop off their Christmas trees at the zoo's Christmas tree recycling point, located in their car park.





Planting for the coronation of King Charles III



The coronation of King Charles III on 6th May is an opportunity for communities to come together in celebration. One of the ways that communities are choosing to mark the occasion is through the creation of floral displays designed to showcase their region during the festivities.

So, if you are planning to create floral displays with a regal theme, what plants should you opt for?

With the coronation taking place in early May, many traditional summer blooms won't flower in time, so the coronation provides a great opportunity to showcase some beautiful spring blooms.

Flying the flag for the UK - Planting schemes could incorporate plants synonymous with the four home nations, such as late flowering jonquilla daffodils to represent Wales; heather for Scotland; roses for England and flax for Ireland.



Choosing regal colours - Purple has long been a colour associated with the monarchy, and spring-time plants offer a range of attractive purple flowers to choose from, including primroses, hardy geraniums and pansies. And if you want to create a red, white and blue theme, bluebells could combine beautifully with lily of the valley and red tulips or primroses.

King Charles' choice – In 2020, King Charles revealed on social media that his favourite flower is the delphinium. Tall and regal in appearance, perennial delphiniums are easy to grow, with flowers that bloom in shades of purple, dusky pink, red and white. As a passionate advocate for preserving wildflower meadows in the UK, King Charles is also a fan of planting wildflowers which can look lovely as part of floral displays.

Whichever combination of flowers, shrubs and plants you choose, Amberol has a suitable **self-watering container**. For example, primroses and bluebells nestled in a bed of heather look equally stunning in **barrier boxes** which are a great way of brightening road ways and frontages - or as part of a larger display in **barrels, troughs** or **metre squared planters**. Plus, our **tiered planters** can be used to create a fabulous centrepiece, bringing the wow factor to any display.



Amberol's self-watering planters come in a variety of 18 standard colours as well as bespoke options on request. We can also create customised signage to display civic logos or commemorative plaques to mark the coronation.

How can we help?

To find out more about how Amberol's self-watering planters could help you create a stunning floral display to mark the coronation, call **01773 830 930** or email **sales@amberol.co.uk**. We can also arrange a bespoke virtual demo to view our planters in more detail.

News from Barnstaple, North Devon

Barnstaple re-joined “Bloom” in January 2021 and our feet haven’t touched the ground since! So far, our “magical journey”, not dissimilar to that of a flying carpet ride, has taken us to some interesting places and enabled us to gain local knowledge and understanding, usually reserved for those “in the know”.

We are delighted to be involved in the “Flourishing Barnstaple” cultural strategy and even more thrilled to say that the town has received £3 million , a share of the Cultural Investment Fund from central Government. This money is already earmarked for some big renovation projects on landmark buildings in Barnstaple so “Barnstaple in Bloom” is unlikely to get its hands on any! However, we understand that interesting ideas are emerging from the project which include the creation of a unique and world class template, for combining the arts and the environment within the remit of North Devon UNSECO Biosphere Reserve. This will be used as an exemplar for other biospheres worldwide.



Croyde - North Devon Biosphere

The biosphere, within which Barnstaple “sits” at the centre, is the UK’s first UNESCO World Biosphere Reserve, started in 2002.

There are four more sites in the UK that have used this model and emulated its success. North Devon Biosphere remains a leader

in the UK on “ecosystem scale approaches” to caring for an area. Broadly, speaking, biospheres are the creation of conditions for people and nature to thrive together.

Developing a template for all other UNESCO biospheres, to show joint working between arts and environment agencies, is one of the desired outcomes of the new strategy. Britain in Bloom towns and villages are already aware of the “power of flowers” and that “flowers matter” to create vibrant, thriving communities.

Beaford Arts and North Devon Biosphere will share the newly renovated Bridge Buildings in 2024 in new offices, and collaborative working will begin. Beaford Arts owns the original archive of James Ravilious. The archive contains photos of people and landscapes across North Devon and lists 79,000 negatives. Using the archive to investigate and understand how the environment is changing, is just one of the ways the arts organisation will work with the ND Biosphere. This is the beginning of a very exciting partnership.

The committee and volunteers at Barnstaple in Bloom continue to think creatively about how to “animate” Barnstaple. We take each area, street by street, and consider the quirks and opportunities. As you all know, this requires patience and “out of the box” thinking.



Stakeholders range from landlords, local authorities, and residents; bringing them together, with a shared vision, through flowers and the arts takes effort and time, but it’s well worth it!

When you have time, come along, and visit us here in Barnstaple!

The Bridge Chambers, Barnstaple

Frances F. Bell MBE
Chair – Barnstaple in Bloom

Regional Judging IYN Assessments	Monday 3rd July to Friday 28th July Monday 3rd July to Friday 28th July
-------------------------------------	--



South West entries in Britain in Bloom Nationals 2023

This year we only have two entries representing the South West, Truro and Exmouth. There is no doubt that they will both do an excellent job representing our region.



Truro Large Town



Exmouth Coastal

RHS South West in Bloom 2023 Schools Painting Competition

The theme for 2023 is

“The Incredible Eddible Garden“

The age groups are as follows:

Up to 6 years old, 7 – 11 years old, 12 – 16 years old

Art should be a maximum of A3 in size. On the back of each painting, put name, age, and name of school and name of city, town or village.

Only one entry per age group, and they should be the winners of your local competition. Please note submitted works are non-returnable!

The best exhibit in each age category
should be sent to: Melissa Poole
c/o 15a Moorcroft Road, Hutton.
Weston super Mare,
North Somerset. BS24 9RW

Entry Forms are available from the web site

Closing date for entries is Friday 14th July 2023.

**Lady Emma always looks forward
assessing the childrens' pictures.**



Chairman's Report

The It's your Neighbourhood in the South West is thriving and maintaining numbers, however if you see a community group that's worthy of inclusion, please encourage them to participate.

Business involvement is a further area for encouragement, as is the parks competition.

Finally many thanks to you all, the Royal Horticultural Society and volunteers throughout the South West

Best of Luck for 2023.

Jon Wheatley
Chairman RHS South West in Bloom

**ATTENTION SOUTH WEST BLOOMERS, IT'S YOUR
NEIGHBOURHOOD GROUPS, BUSINESSES AND PARKS ENTRIES**

WE ARE NOW ON INSTAGRAM!



**Follow us @southwestinbloom
#southwestinbloom**

Please message if you would like us to repost any content, especially in the lead up to, and on your judging day. Not on Instagram, no problem, send a photo or two to southwestinbloom@aol.com or whatsapp to: 07875 849809, and we will share as much content as we possibly can!

SOUTH WEST IN BLOOM DISCRETIONARY AWARDS

Whilst out judging for South West In Bloom, our Judges and Assessors will also be on the lookout for any projects, groups, and individuals to nominate for our Discretionary Awards. The winner of each Award will be chosen by SWIB's Discretionary Panel in late summer. *Our Discretionary Awards include:

ALF CROUCH MEMORIAL AWARD for outstanding services to Britain in Bloom

ABBISS CUP best horticultural display - municipal

CITY OF BATH TROPHY for best landscaping

MICHAEL McGAHEY TROPHY for exceptional community effort

BRUFORD CUP best horticultural display – non municipal

CLEM PREECE MEMORIAL CUP for outstanding school effort promoting and supporting Britain in Bloom

SUTTONS SEED CUP outstanding area of nature conservation

LONDON AND MANCHESTER CUP outstanding contribution to an environmental initiative

SOUTH WEST TOURISM SALVER best portfolio

SARGENT TROPHY for outstanding effort and dedication from a Main Competition entry

GORDON FORD TROPHY Best It's Your Neighbourhood entry

CHAMPION OF CHAMPIONS Competition between last year's category group winners

SOUTH WEST IN BLOOM YOUTH AWARD for outstanding contribution by youth(s) or youth group

WEST COUNTRY TV CUP for an outstanding specific project

THE MONK TROPHY for the best use of native plants indigenous to the area

WHEATLEY TROPHY outstanding landscaped commercial or industrial site

PLANTSCAPE COASTAL TROPHY best seaside entry

BUDGE SOCIAL MEDIA TROPHY best social media

BARRY CRUSE MBE TROPHY best website

VIRADOR SCHOOL COMPOSTING AWARD best composting scheme

SHAUN CREGAN TROPHY best floral pub

AMBEROL TROPHY best business floral display

VIC VERRIER CUP best new entry

SERCO CUP best community initiative

DENISE JAMES ART IN THE LANDSCAPE best art interpretation in landscapes

SPONSORS AWARD most meritorious entry, excluding Champion of Champions entries

URBAN COMMUNITIES best urban community

INCLUSIVE GARDENING AWARD outstanding gardening inclusivity opportunity and involvement

CPRE ENVIRONMENTAL AWARD outstanding initiative of enhancing/supporting/increasing biodiversity or pollinators or soil condition or reducing carbon footprint or water consumption.

*Discretionary Awards are subject to changes at any time, at the discretion of our SWIB Judges and Committee.



Important Dates for 2023

Regional Judging	Monday 3rd July to Friday 28th July
IYN Assessments	Friday 3rd July to Friday 28th July
Pride in Park Judging	June 2023 to December 2023
Presentation	Tuesday October 3rd 2023 The Cathedral, Truro

CPRE Environment Award RHS Southwest in Bloom 2023

CPRE, the countryside charity, works for a beautiful and thriving countryside that enriches all our lives. There are several ways in which individuals and communities can work towards this goal and we are delighted to be pairing with RHS in the South-West to highlight them through a new environment award

CPRE is looking for projects that include all or some of the following initiatives: maintaining and enhancing biodiversity; helping reduce carbon footprint through renewable energy use; locking carbon in the soil or planting native trees and hedgerows; support for pollinators through wildflower meadow creation; reducing water consumption; growing UK native plants and trees; improving soil condition with use of green manures, application of local or home-made compost.



Project Examples:

Planting or sensitive management of hedgerows:



Of species rich British native hedgerow plants such as hawthorn, holly, blackthorn, hazel, dogwood, beech, field maple, spindle; alder or yew.

Planting of native tree species

to reduce air pollution (especially in towns and cities) keep soil nutrient rich; help prevent flooding; store carbon and support a wide range of British wildlife.

Wildflower meadow creation:

Transforming single species grassland; brownfield sites; or abandoned areas into flower-rich meadow areas using British native perennial and/or annual wildflowers that support pollinators.

Wetland Restoration and/or Pond Creation:

At landscape scale - removal of land drains to allow water to stand on land as groundwater. Schemes that connect up ditches and streams to rivers; clearing rivers of plastics and other pollution; encouraging wetland plants and animals to thrive by providing habitat for waterfowl (ducks/geese and swans) and species of birds that prefer wet meadows i.e., lapwing.



At garden scale reducing dependence on mains supplied water is vital. The RHS advocate Mains2Rains to save water.

Creating ponds in gardens will support much of the aquatic life seen on a larger scale.

Wilding the Landscape and Garden:

Wilding or 're-wilding' projects aim to restore whole ecosystems. This can aid nature's recovery and provide safe havens for all kinds of wildlife by connecting areas of rich natural habitat or broader mosaics of nature friendly land.

If homes for wildlife can be provided such as adding nest boxes; bug hotels; roosting pockets or hedgehog homes; lawns managed in a sustainable way and soil enriched with home-made compost or bought in peat-free compost, then gardens too can become sustainable places for people and wildlife.



When you are taking your judges around on the Tour, take the opportunity to point out any suitable environmental projects to them.

Planting/Maintaining or Restoring an Orchard:

The Southwest is famous for its orchards and thus the production of delicious fruit. Hundreds of traditional varieties of cooking and eating apple varieties, plums, crab apples and pears have been grown.

At garden scale, even planting one productive tree could allow pollinators access to pollen and nectar in spring and early summer and berries, nuts, or seeds in winter.

Reducing Dependence on Plastics:

Schemes to re-use and recycle plastics in gardens and on farms are important for a healthy environment. Encouraging gardeners to use sustainable plant pots made from natural materials such as wood; terracotta or natural fibres like coir or even made from old newspapers that can be hand-made, saves plastic waste.

Using traditional hand tools can help reduce our dependence on plastics and fossil fuels or even go electric! Recycling garden waste at home in compost heaps saves on fuel for 'green bin' collection and carbon in miles. We are also looking for innovative ideas for reducing dependence on plastics.



CPRE supports community involvement in any of the initiatives listed. Projects which reach out to underrepresented communities or those that have had little access to the countryside and nature are especially welcome.

To find out more about the local CPRE in your area, please visit <https://www.cpre.org.uk/about-us/who-we-are/local-groups/>



CPRE ENVIRONMENTAL AWARD

Outstanding initiative of enhancing/supporting/
increasing biodiversity or pollinators or soil condition
or reducing carbon footprint or water consumption

President's address

First of all my apologies for not being able to join you. old age creeps up and my mobility problems continue.

I'm sure the seminar was a great success and I thank all of our contributors that did their presentations. Chairman Jon, always the pro on his trip to Mexico, Catherine MacDonald, with her knowledge of designing Chelsea gardens, and finally, Mark Gregory for his talk on award winning gardens at Chelsea. Often winning the **"People's choice award"** . I've always admired Mark's work, a very talented man.

All the talks took me back to when I designed Parks department displays, even after drawing up detailed drawings, This links in with Jon's talk on Mexico,. Years ago I designed a Mexican courtyard, with terracotta walls, and a pair of wrought iron gates to create a vista, plus Zinnias and Dahlias to complete the scene, along with loaned plants from local nurseries.

This is when the staff hated me coming on site, final decisions to be made, not right colour on walls, should gates be open or closed, or partly, but that's showing.

Jon has recently been awarded the RHS Victoria Medal of Honour, it is their highest award, only 63 members at anyone time, the number of years of her Majesty Queen Victoria's reign, so my congratulations to him.

Thanks to all of our sponsors for their continued support, let's hope we all get some decent weather after a very mixed bag so far.

So I would like to wish you all the best for this year's judging, I'm sure the King's Coronation will feature in many of your designs.

Then thanks to all of our judges who give their valuable time to judge your entries, and Melissa, Jon and Terry, for all your hard work for SWIB

Bye for now

Vic Verrier MBE President SWIB

PLANTING DESIGN FOR GARDENS & SHOWS - Part 1

by Catherine MacDonald

Principal Landscape Designer, Landform Consultants Ltd

Introduction:

I have been a garden designer for over 17 years, and after working for design greats Luciano Giubbilei & Christopher Bradley-Hole I joined Landform in 2010 to start and then lead the company's developing design department. Following my talk at the RHS South West in Bloom Spring Conference, in Glastonbury this March, Terry Porter asked me to contribute to the Newsletter, by writing about how I approach planting design and telling you some of my favourite and most effective plant combinations.

A. Planting Design for Gardens:

Here are some of my general tips for designing a successful planting scheme:

- consider architecture of the house & the setting/surrounding environment
- position your trees and structural/key shrubs first
- then you're ready to start work on your perennials:
 - produce a mood board of plant species as an overview of the scheme
 - if designing for a client show them a couple colour palette options
- planting plans: arrange plants in a naturalistic style or in groupings
- create rhythm/flow to your planting, repeat combinations for visual impact

Example 1:

Garden location: Hampshire

Planting palette: green, white, yellow, orange/rust, pale pink & reds

Across are photos of plant combinations in one of this garden's planting beds:

		
<p>Achillea 'Credo'</p> <p>Anemanthele lessoniana</p> <p>Buxus sempervirens</p> <p>Echinacea 'Tiki Torch'</p> <p>Pittosporum 'Golf Ball'</p> <p>Sanguisorba 'Pink Tanna'</p>	<p>Allium 'Mount Blanc'</p> <p>Anemanthele lessoniana</p> <p>Cenolophium denudatum</p> <p>Eremurus 'Tap Dance'</p> <p>Hydrangea 'Strong Annabelle'</p> <p>Phlomis russelliana</p>	<p>Achillea 'Terracotta'</p> <p>Anemanthele lessoniana</p> <p>Buxus sempervirens</p> <p>Cenolophium denudatum</p> <p>Hydrangea 'Strong Annabelle'</p> <p>Sanguisorba 'Pink Tanna'</p>

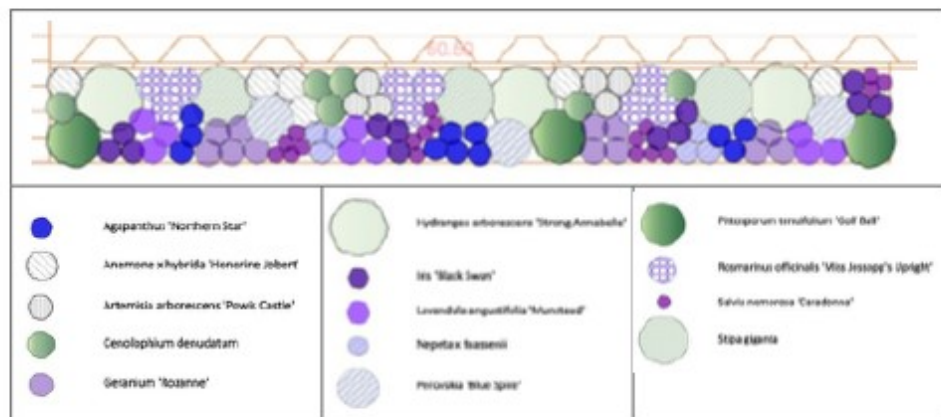
Example 2:

Garden location: Surrey

Planting palette: blues, purples, pale pink, white & green

Included is a mood board of some plant species I used in the planting scheme for this recently designed Surrey garden, as well as the planting plan for one of the borders in the south facing borders in the garden (and the associated plant key).





B. Planting Design for Shows:

When I spoke at the Spring conference the second part of my talk focused on planting design for Show gardens since I felt this would be particularly interesting and relevant to anyone involved in competing in RHS Britain in Bloom.

So, to follow are ideas for those interesting in Show Garden planting design:

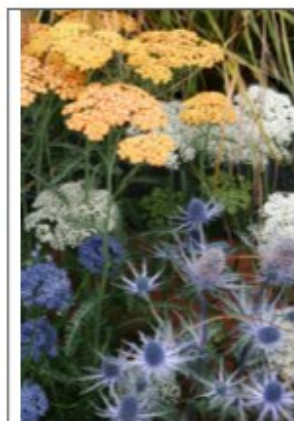
- write your garden brief and stick to it
- try to include a theme, some original ideas or slightly different elements
- make sure your plants are good quality, and be confident in your planting
- carefully read and consider the judging criteria
- surround yourselves with a planting team you trust & have fun with!

My first Show Garden as a designer was 'The Landform Garden' at RHS Hampton Court in 2012, and it is still a design I remain proud of. It was awarded Gold and Best in Category and helped me to become recognised as successful Show garden planting designer, which led onto other opportunities at RHS Shows.

This planting palette included complementary colours, blue & orange, alongside shades of green and white. I used blue & orange as they are my favourite colours, but the result was that I created a scheme that attracted interest because it was bold and a colour combination not often seen by the public. I loved the plants I chose for this garden and enjoyed planting it and I think that showed.



Below are photos of some of plant combinations I used on the garden:



Achillea 'Terracotta'
Allium caeruleum
Anemanthele lessoniana
Eryngium 'Jos Eijking'
Selinum wallichianum



Achillea 'Terracotta'
Echinops 'Taplow Blue'
Euphorbia wallichii
Selinum wallichianum



Astrantia major 'Shaggy'
Cenolophium denudatum
Deschampsia cespitosa
Digitalis p. 'Milk Chocolate'
Epimedium x rubrum

Spring Seminar 2023

We held a very successful seminar on Thursday 23rd March at the Town Hall, Glastonbury. Our thanks must go to Glastonbury Town Council and Glastonbury in Bloom for hosting a superb event. They provided excellent floral displays for the stage and the tables.



The first speaker was Catherine MacDonald, who talked on the use of plants in garden design, and she has added an article for this newsletter.

This was followed by top Garden Designer Mark Gregory, who gave a very interesting talk showing the whole process of creating a show Garden.

It went from the first ideas for the garden, through all the challenging times, until finally arriving at a Gold Medal Garden.

He has designed many Gold winning gardens at Chelsea and other RHS shows. This year he will have a very different garden at Chelsea, which he has said ***“it will be my most challenging for the construction and design”***. It will feature a Michelin star Chef in his kitchen garden, and he will be cooking each day on the garden for a number of Chelsea Pensioners.



Presentations by Cllr Jon Cousins, Mayor of Glastonbury & Mark Gregory



Yeovil Parks 5 Star



Rock Park Barnstaple 5 Star



Pavilion Gardens Exmouth 5 Star



Trenance Gardens, Newquay 5 Star



Great Torrington Common 5 Star



Portishead Parks 5 Star

Our thanks go to Nigel Bloxhan for taking photos at our Spring Seminar.. Photos of the Parks presentations are available from Nigel who has put them on his website <http://www.ukphotogallery.com> where all the pictures can be viewed and ordered. You will need the small print price list which is more reasonable than the Art Print Price List.

Memories of a South & South East in Bloom Judge

I was still working in Hyde Park when once again my boss Ashley Stephenson, who was also Chairman of South East in Bloom asked me to undertake some judging as they had insufficient judges. Both London in Bloom and the South East was administered by the Tidy Britain Group and the Tourist Board. In the South East the offices were based in Brighton and he suggested I contact the Co-ordinator Janice Dockrill. We met at the Tidy Britain Group Offices in London, but I had hoped she was going to suggest the Brighton Offices and would suggest a date that coincided with the Brighton Races.

It was evident from our meeting that the usual pool of judges was struggling to visit all of the entrants. Once again the entries were classified by population.

When I started judging all the coastal resorts were included with everyone else. The local Parks Depts had to provide fantastic floral displays, particularly along the seafront. Carpet bedding displays or Floral Clocks, Coats of Arms, even sponsored displays paid for by local companies. Decorated roundabouts and parks full of colour. Hanging baskets were everywhere. This was a fantastic time to be a judge.

Once again there would only be a winner of each category and the entrant did not receive any feedback.

For every entry, two judges were appointed and as I mentioned earlier there were so many entries and so few judges that it was not unusual to judge three entries in a day.

It was a nightmare juggling the time spent judging and then driving to another entrant. Each judge usually travelled in their own car and going to each entrant was akin to being in the Monte Carlo Rally.

During the eighties when I started judging in the South East there was no limit on the number of people who would accompany the judges on their tour and would all want to have their say at the same time in most cases.

To say you went home exhausted was an understatement and a lunch break was unheard of.

The transportation provided by the entrant sometimes verged on the ridiculous. Both the Tidy Britain Groups and the Tourist Board encouraged entrants to go to great lengths to gain as much publicity as possible. They hoped to attract local television and radio on the day as well as local and national newspapers reporters and more bizarre modes of transport would attract attention.



One seaside resort provided a stretch limousine and all the seats laid back, so the judges were nearly horizontal. However, the biggest problem was that all of the windows were blacked out and the judges were unable to see anything.

On another occasion, Judging with a co-judge we were nearly reaching the stage of holding on one of the most

hair-raising tours I have ever experienced, The two ladies that were our escorts were disagreeing with each other before we started. This continued throughout the whole tour. The one lady with the itinerary kept telling the other lady who was driving where to go. This incensed the driver who would go the opposite direction as a matter of course. We were sitting in the back and my co-judge Peter, passed me his clipboard on which he had written “have you made a will”.

Other modes of transport included a vintage bus with solid tyres and the route included cobbled sections of road. Then there was the slowest form of transport which was a horse and cart, with hay bales to sit on. The horse which had got out of the wrong side of the stable that morning, so despite being offered treats from its handler would just stop and refuse to carry on.

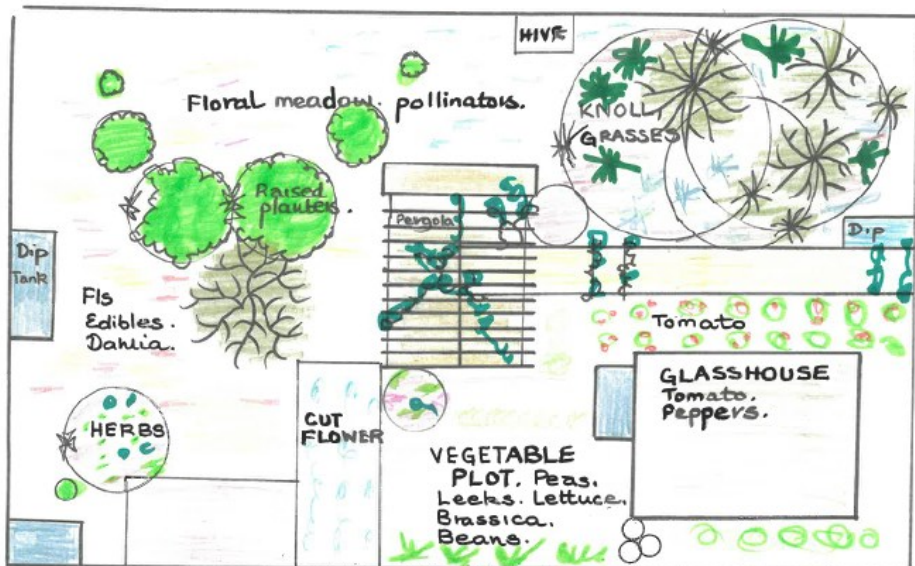
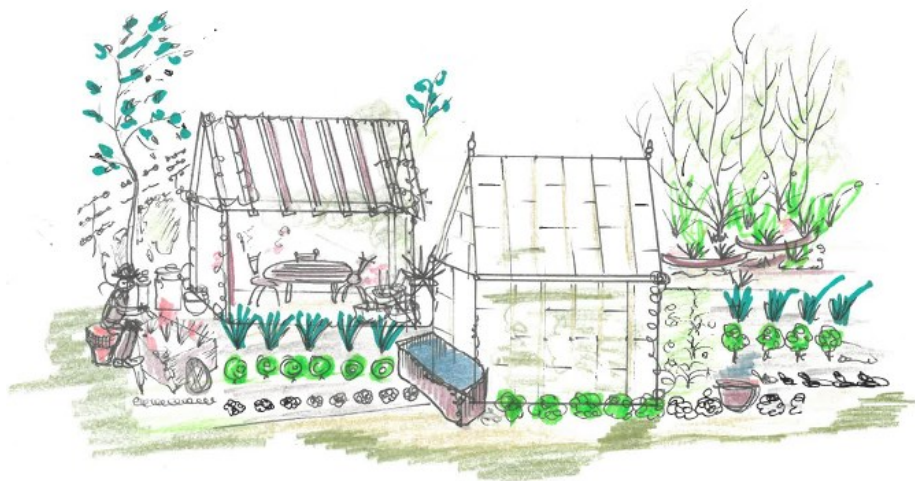
It always upset me that you could be taken to some entrants that knew they would not win but showed some incredible decorative pubs, local businesses and shops and all their efforts would receive nothing other than the thanks of the judges on the day.

I therefore introduced a certificate of excellence that we still award today. I once awarded a certificate to a funeral undertakers who had one of the most colourful gardens leading up to the office. He reckoned that, naturally his clients would be upset when they arrived and the colourful garden provided an initial talking point. He also had a great sense of humour as he signed his letter “yours eventually”.

I need to recharge my batteries before I tackle the next tour.

Jim Buttress, VMH, South & South East in Bloom Judge

South West in Bloom at Chelsea 2023



LEARNING to GROW

GATHER and SHOW FEATURE,

S.W.I.B. Burpee UK . Chelsea 23

Stonebarn Landscapes.
South West in Bloom.

South West in Bloom at Chelsea again

South West in Bloom will be following on from our success at Chelsea two years ago to again enter a garden in the Great Pavilion. This is our region's way of promoting Bloom, and especially South West in Bloom to the many visitors that attend Chelsea Flower Show.

The exhibit will represent much of Bloom including Flowers, Vegetables , Fruit and a number of eye catching features. Suttons and Thompson & Morgan have provided most of the seed for the vegetables on the garden.

Burpee Europe will be growing some specialist plants for us including a few that will be new introductions. There will be the sunflower, "Desiree Red" and tomato's "Black Moon" and "Bliss"

The garden will also have a display of grasses from Neil Lucas of Knoll g Grasses who will also be launching his new book at the press day called "Grasses for Gardens and Landscapes".

Our stand will also have five entries for the Plant of the year, from Burpee, Suttons and Thompson & Mogan.

We will be giving two of Glendale's apprentices the opportunity to gain more horticultural experience by working with our team at Chelsea.

Gordon Lennox Trophy

At the recent RHS award ceremony we received the Gordon Lennox Trophy for the Best Vegetable exhibit at RHS Shows in 2022, for our Exhibit for Marshalls seeds at Chelsea 2022.

The trophy was presented by Keith Weed, President of the RHS



COMPETITION ENTRIES 2023

Champion of Champions 10k +

Richard Beale & Nigel Bloxham

Torquay in Bloom Truro in Bloom Exmouth in Bloom
Sidmouth in Bloom

Champion of Champions less than 10k

Martyn Davis & Martin Hambidge

Kingsbridge in Bloom Radstock in Bloom Bere Alston in Bloom
Bleadon in Bloom Hayle in Bloom

South West Tourism Cup Over 80,000

Richard Budge & Ian Murphy

Bath in Bloom

Tesco Cup 35,000 -79,999

Sean Fletcher & Nick Jones

Paignton in Bloom South Swindon in Bloom Taunton

St Bridget Cup 19,000 -34,999

Jon Wheatley & Tim Ely

Portishead in Bloom Keynsham in Bloom Yeovil in Bloom

Barnstaple in Bloom Newquay in Bloom

Portman Cup 14,000 - 18,999

John Yeo & Ian Murphy

Wellington Tiverton in Bloom Thornbury in Bloom
Brixham in Bloom

Sargent Cup 9,000 - 13,999

Camilla Bassett Smith & Graham Bell

Minehead Babbacombe Bay in Bloom

Preece Cup 7,000 - 8,999

Terry Porter & Ian Cawley

Glastonbury in Bloom Bradford on Avon Ilfracombe in Bloom

Ayre Cup 2,500 - 5,499

Paul Collier & Steve Clampin

Dartmouth Green Partnerships Westfield in Bloom Cary in Bloom

Cox Cup 1,500 - 2,499

Bob Sweet & Jim Collins

Cannington in Bloom Tadpole Garden Village in Bloom

Mary Mortimer Under 1,500

Jane Pagano & Ian Gayton

Tresillian Plympton St Maurice Conservation Area
Lympsham including Eastertown Haselbury Plucknett in Bloom

Pennant Entries

Due to the success of the Pennant entries, we are continuing these classes, but with the village section, we have divided it into Devon & Cornwall.

Also due to numbers we have combined the Town category

Pennant Town North & South

Burnham on Sea District in Bloom
Bovey Tracey in Bloom

Judges Dave Purkiss & Rod Pooley

Pennant Village Cornwall

Mitchell Village
Calstock in Bloom
St Buryan Village in Bloom
Illogan in Bloom

Judges Richard Budge & Jim Collins

Pennant Town Centre

Chippenham

Judges Sean Fletcher
A N Other

Pennant Village Devon

Stoke in Bloom
Poltimore in Bloom
Woolwell in Bloom
Charmouth Parish Council

Judges John Davies &
Lesley Jelleyman

Bids

InExeter
Plymouth Waterfront Partnership

Judges Lynette Talbot
Bob Ollier

Important Dates for 2023

Regional Judging	Monday 3rd July to Friday 28th July
IYN Assessments	Monday 3rd July to Friday 28th July
Pride in Park Judging	June 2023 to December 2023
Presentation	Tuesday October 3rd 2023 The Cathedral, Truro



SOUTH WEST



Upper Bog Garden RHS Rosemoor, Richard Bloom

Important Dates for 2023

Regional Judging	Monday 3rd July to Friday 28th July
IYN Assessments	Friday 3rd July to Friday 28th July
Pride in Park Judging	June 2023 to December 2023
Presentation	Tuesday October 3rd 2023
	The Cathedral, Truro

Secretary. Melissa Poole
c/o 15a Moorcroft Road
Hutton, Weston super Mare
North Somerset. BS24 9RW
E Mail southwestinbloom@aol.com
Tel No 07875 849809

Editor. Terry Porter
15a Moorcroft Road
Hutton, Weston super Mare
North Somerset. BS24 9RW
E Mail taporter11@aol.com .
Tel No 07989 855339

Our South West in Bloom Facebook Page is also a great way for groups to showcase the work they have been doing- if your group has a facebook page, we would love for you to join ours.

<https://www.facebook.com/pages/South-West-In-Bloom/193263914018665>

Web Site www.southwestinbloom.org.uk